

ULTRA SERIES TELESCOPIC BOOM LIFTS SPECIFICATIONS

1200SJ

Ultra Series Telescopic Boom Lifts

Reach Specifications

Platform Height	120 ft (36.58 m)
Horizontal Reach	75 ft (22.86 m)
Up and Over Height	—
Swing	360° Continuous
Platform Capacity—Restricted	1,000 lb (454 kg)
Platform Capacity—Unrestricted	500 lb (227 kg)
Platform Rotator	180°
JibPLUS®	Length 8 ft (2.44 m)
	Horizontal Motion¹ 180°
	Vertical Motion 130° (+75/-55)

Dimensional Data

A. Platform Size	36 x 96 in. (0.91 x 2.44 m)
B. Overall Width	Axles Retracted 8 ft 2 in. (2.49 m)
	Overall Width Axles Extended 12 ft 6 in. (3.81 m)
C. Tailswing	5 ft 6 in. (1.67 m)
D. Stowed Height	10 ft (3.05 m)
E. Stowed Length	34 ft 11 in. (10.64 m)
F. Wheel Base	12 ft 6 in. (3.81 m)
Ground Clearance	Axle 12 in. (30 cm)
	Chassis 25.5 in. (65 cm)
Weight²	40,900 lb (18,552 kg)

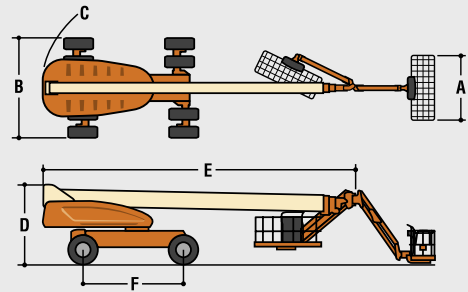
Chassis

Max Ground Bearing Pressure*	100 psi (7.03 kg/cm²)
Drive Speed	3.25 mph (5.2 mph)
Gradeability	45%
Turning Radius (Inside)	Axles Retracted 14 ft 5 in. (4.39 m)
	Axles Extended 8 ft (2.44 m)
Turning Radius (Outside)	Axles Retracted 22 ft 6 in. (6.86 m)
	Axles Extended 19 ft 4 in. (5.89 m)
Crab Steer Ratio³	1:1
Axle Oscillation	12 in. (30 cm)
Tires/Type	445/50D710 Foam Filled

Power Source

Diesel Engine	Deutz BF4M 2011	87 hp (65 kW)
Fuel Tank Capacity		31 gal (117 L)
Hydraulic Reservoir		55 gal (208 L)
Auxiliary Power		12V DC
Generator		7500 Watt

- * Ground bearing pressure applies to standard tires.
 1. Capacity is limited to 500 lb (227 kg) when JibPLUS is extended horizontally.
 2. Certain options or country standards increase weight.
 3. Ratio of forward travel to lateral travel.



Standard Features

Platform: 36 x 96 in. (0.91 x 2.44 m) Side Entry
 8 ft (2.44 m) JibPLUS® Boom
 Selectable Capacity Envelope
 Inward Swinging Gate
 180° Hydraulic Platform Rotator
 AC Receptacle in the Platform
 SkyPower® Package
 7500 Watt Generator
 • 240/120V Single Phase
 • 240V 3 Phase
 1/2 in. Air Line to Platform

5 Degree Tilt Alarm/Indicator Light

All Motion Alarm

Swing-Out Engine Tray

12V DC Auxiliary Power

Hourmeter

Control ADE® System

Full-time 4WD

3 Selectable Steering Modes

Drive-out Extendible Axles

Oscillating Axle

Proportional Controls

Gull-Wing Hoods

Operator Tool Tray

445/50D710 Foam Filled Rim

Protector Lug Tread Tires

Platform Console Machine Status

Light Panel*

Lifting/Tie Down Lugs

Engine Distress

Warning/Shutdown—
 Selectable via JLG Analyzer

Available Options

Platform: 36 x 72 in. (0.91 x 1.83 m) Side Entry

Light Package¹

Flashing Beacon

Soft-Touch System Platform

6 ft/8 ft (1.83 m/2.44 m)

Catalytic Muffler

Cold Weather Start²

Hostile Environment Kit³

Mesh to Top Rail

1. Includes platform mounted work lights and drive/back-up lights.

2. Includes glow plugs, battery heater and oil tank heater.

3. Includes console cover, boom wipers and cylinder bellows.

Accessory Packages

SkyWelder®

SkyCutter®

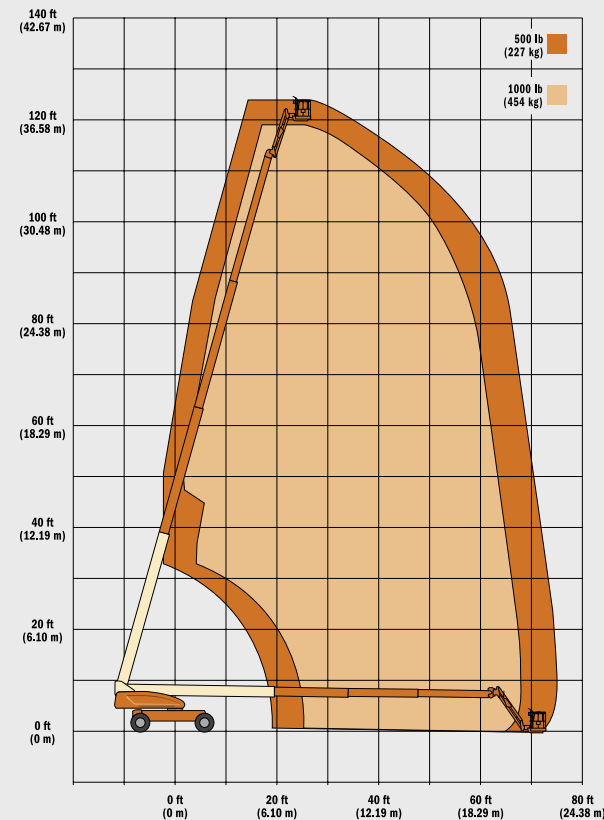
SkyAir® (1200/1350SJ only)

SkyGlazier®

Nite Bright®

Pipe Racks

* Provides indicator lights at platform control console for system distress, fuel level, low fuel, 5 degree tilt light and foot switch status.



ULTRA SERIES TELESCOPIC BOOM LIFTS SPECIFICATIONS

1350SJ

Ultra Series Telescopic Boom Lifts

Reach Specifications

Platform Height	135 ft (41.15 m)
Horizontal Reach	63 ft 2 in. (19.25 m)
Up and Over Height	—
Swing	360° Continuous
Platform Capacity—Restricted	1,000 lb (454 kg)
Platform Capacity—Unrestricted	500 lb (227 kg)
Platform Rotator	180°
JibPLUS®	Length 8 ft (2.44 m)
	Horizontal Motion¹ 180°
	Vertical Motion 130° (+75/-55)

Dimensional Data

A. Platform Size	36 x 96 in. (0.91 x 2.44 m)
B. Overall Width	Axles Retracted 8 ft 2 in. (2.49 m)
	Overall Width Axles Extended 12 ft 6 in. (3.81 m)
C. Tailswing	5 ft 6 in. (1.67 m)
D. Stowed Height	10 ft (3.05 m)
E. Stowed Length	38 ft 11 in. (11.86 m)
F. Wheel Base	12 ft 6 in. (3.81 m)
Ground Clearance	Axle 12 in. (30 cm)
	Chassis 25.5 in. (65 cm)
Weight²	45,000 lb (20,411 kg)

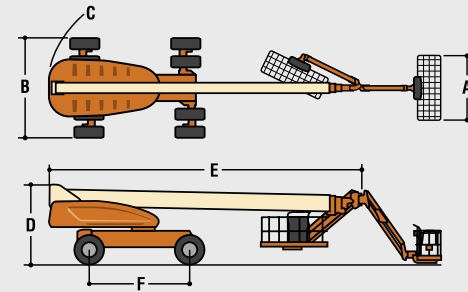
Chassis

Max Ground Bearing Pressure*	105 psi (7.38 kg/cm²)
Drive Speed	3.25 mph (5.2 mph)
Gradeability	45%
Turning Radius (Inside)	Axles Retracted 14 ft 5 in. (4.39 m)
	Axles Extended 8 ft (2.44 m)
Turning Radius (Outside)	Axles Retracted 22 ft 6 in. (6.86 m)
	Axles Extended 19 ft 4 in. (5.89 m)
Crab Steer Ratio³	1:1
Axle Oscillation	12 in. (30 cm)
Tires/Type	445/50D710 Foam Filled

Power Source

Diesel Engine	Deutz BF4M 2011	87 hp (65 kW)
Fuel Tank Capacity		31 gal (117 L)
Hydraulic Reservoir		55 gal (208 L)
Auxiliary Power		12V DC
Generator Nominal/Continuous		12,000/7,500 Watt

- * Ground bearing pressure applies to standard tires.
 1. Capacity is limited to 500 lb (227 kg) when JibPLUS is extended horizontally.
 2. Certain options or country standards increase weight.
 3. Ratio of forward travel to lateral travel.



Standard Features

Platform: 36 x 96 in. (0.91 x 2.44 m) Side Entry
 8 ft (2.44 m) JibPLUS® Boom
 Selectable Capacity Envelope
 Inward Swinging Gate
 180° Hydraulic Platform Rotator
 AC Receptacle in the Platform
 SkyPower® Package
 7500 Watt Generator
 • 240/120V Single Phase
 • 240V 3 Phase
 1/2 in. Air Line to Platform

5 Degree Tilt Alarm/Indicator Light

All Motion Alarm

Swing-Out Engine Tray

12V DC Auxiliary Power

Hourmeter

Control ADE® System

Full-time 4WD

3 Selectable Steering Modes

Drive-out Extendible Axles

Oscillating Axle

Proportional Controls

Gull-Wing Hoods

Operator Tool Tray

445/50D710 Foam Filled Rim

Protector Lug Tread Tires

Platform Console Machine Status

Light Panel*

Lifting/Tie Down Lugs

Engine Distress

Warning/Shutdown—
 Selectable via JLG Analyzer

Available Options

Platform: 36 x 72 in. Fall-Arrest Platform: 36 x 96 in.

(0.91 x 1.83 m) Side Entry

Light Package¹

Flashing Beacon

Soft-Touch System Platform

6 ft/8 ft (1.83 m/2.44 m)

Catalytic Muffler

Cold Weather Start²

Hostile Environment Kit³

Mesh to Top Rail

1. Includes platform mounted work lights and drive/back-up lights.

2. Includes glow plugs, battery heater and oil tank heater.

3. Includes console cover, boom wipers and cylinder bellows.

Accessory Packages

SkyWelder®

SkyCutter®

SkyAir® (1200/1350SJ only)

SkyGlazier®

Nite Bright®

Pipe Racks

* Provides indicator lights at platform control console for system distress, fuel level, low fuel, 5 degree tilt light and foot switch status.

