

DINO[®]180T



DINO Lift[®]

Get Lifted[™]

T-SERIES

DINO[®] 180T



Reliable and stable with long horizontal outreach
– wide range of possibilities for working.

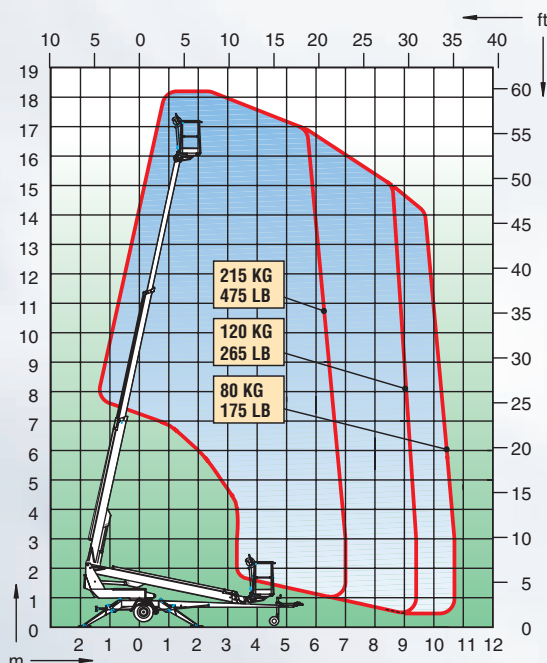


Lightweight and well balanced
– easy to tow and move at the site.



Battery operated 180TB model
– enables use wherever AC mains power is not available.

Technical specification



Max. working height	18.0 m	59'
Max. platform height	16.0 m	52'5"
Max. outreach	10.7 m	35'
Support width	3.8 m	12'6"
Lifting capacity	215 kg	475 lb
Basket size	0.7x1.3m	2'4" x 4'3"
Boom rotation	cont.	cont.
Basket rotation	90°	90°
Boom control	proport.	proport.
Transport length	7.41 m	24'4"
Transport width	1.78 m	5'10"
Transport height	2.14 m	7'0"
Weight	1800 kg	3960 lb
Driving system	std	std
AC-socket in the basket x 2	std	std
Electro motor	std	std
Petrol power pack	opt.	opt.
Gradeability	25%	25%

The specification is subject to change without notice.

T-series DINOs are lightweight, compact and easy to operate.

Hydraulic outriggers enable quick and easy set up.

Proportional controls and telescopic boom ensure stable and precise access to the work position even at long outreach.

DINO Lift[®]

Dinlift Oy • Raikkolantie 145
FI-32210 Loimaa • Finland

Tel +358-2-76 25 900
Fax +358-2-76 27 160
Internet www.dinlift.com